



Anderbun Pty Ltd  
ABN 33 984 172 788  
Builders Registration CDB-L 69166

## Kitchen, Laundry and Bathroom Renovations

### Who are Procoat?

Procoat is a family owned and operated company. We have been operating successfully for over 25 years, and we understand the value of experience and a good reputation.



To this end we ensure that all our people are highly trained and well qualified, which means you receive the highest standards in both quality of service and product.

### How can I be sure your company is legitimate?

We are long time members of the Master Painters Association of Victoria, a peak body to oversee the ethics and compliance of its members, also members of the Housing Industry Association (HIA), and we have been incorporated for over twenty-five years. Our company also has Builders Registration CDB-L 69166.



**you're in  
good hands**

### How long does the renovation process take?

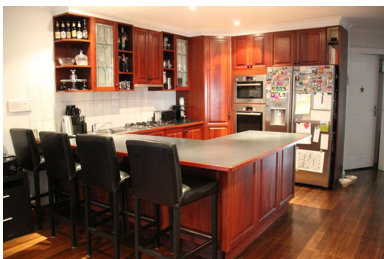
From start to finish the joinery component of your kitchen, laundry and bathroom project is generally between 10-15 working days, depending on the scope of works agreed for your project. Before commencing works, we will agree upon what we call the extraction date and the reinstallation date, which we hold fast in our schedule of works.

Throughout this time you will have a functional kitchen, as we are only removing what we call the skins, being the doors, drawer fronts and panels.

You don't need to empty your cabinets or drawers unless specific ones are to be removed. You will still have access to your benches and oven, allowing you to proceed with your life as close as possible to normal.

Benchtops and Splashbacks will add to this time frame depending on the types chosen.

### Can you build new kitchens, laundry or bathrooms?



Yes we can, although it is far more **economical to recycle** as much of the existing kitchen, laundry or bathroom as is possible.

If you do wish to have a new kitchen etc, we will initially discuss we your desired requirements, and provide you with a free estimate of the likely costs. If you wish to proceed further, we will advise the cost to prepare formal drawings for

your approval, and advise on the process.



### What if I only have minor repairs to be undertaken?

We also offer a kitchen maintenance service for minor repairs such as replacing hinges, handles and other minor works to your kitchen, Laundry or Bathrooms. Access to booking this service is via: [procoatkitchenrepairs.com.au](http://procoatkitchenrepairs.com.au)

### Can I modernize my timber or routed profiled doors?

Yes certainly, if your doors, drawer faces or panels are either damaged, made from raw timber, or have routed profiles that you no longer wish to have, we can replace them quite readily with new 2pac coated flush finished, alternative profiles, or with new laminate finishes if you wish.

### What is 2pac?

2pac is a common reference to the application of a traditional polyurethane system of coatings that create a very hard and durable surface (unlike the softer acrylics and glazes).

There are very significant quality differences between our traditional 2pac application, when compared to spray painters just applying a set number of coats to your kitchen joinery in-situ.



### What is Vinyl Wrap?

Vinyl Wrap is just that, a plastic wrap that is a 2pac look alike, and has a very limited life. Most will show signs of lifting within a couple of years when located near heat sources, such as ovens and underneath kettles.



While some may last beyond ten years, most have peeled and fallen off after 6-7 years.

The good news is that we can extract these items, remove the plastic film and resurface with our traditional 2pac systems, allowing your existing doors and drawer faces to be recycled.

### What is Laminate?

Laminate also commonly referred to as Laminex, is a very durable surface and can be readily resurfaced with the traditional 2pac coating system to enable a colour or sheen change, enabling the tired kitchen to be revitalized.

Resurfacing of laminates also covers the sometimes unsightly lines where the face meets the banded edges on the doors, drawer fronts and panels.



### What is the 2pac process?



The process is quite different to spray painters who just spray onto the surface with minimal preparation, the **traditional 2pac application** requires extensive surface preparation, prior to the application of three wet on wet coatings of high build primers.

Around half of these coatings are sanded away with differing grades of sand papers until we obtain a surface that is finely finished, before we start applying our topcoats. Again three wet on wet coats of topcoats are applied to obtain the high quality of finish and adhesion.

If a high gloss finish is called for, the finished product is cut and polished in a similar process to how your car is cut and polished.

None of this process can be replicated by merely spraying a set number of coats in your home. Nor can the dust or overspray be adequately contained.



### Will the 2pac chip?

Although the 2pac surface is a very hard durable surface, like any product it can be damaged when struck hard enough, the good news is that it can be repaired unlike when damage occurs to vinyl wrap.

For example, in the majority of kitchens take a look at the top couple of your cutlery drawers and you will notice cuts and dings where utensils have been caught between the closing drawers. We supply you with an easy to use touch up kit that allows for these to be readily repaired should the occasion arise.

## Kitchen, Laundry and Bathroom Renovations

### Will you spray in my home?

We do not spray in your home, it is way to dangerous for that type of activity. The products if ingested while airborne would be quite toxic, not only for you and your family, but also for us. Apart from this the surfaces cannot be adequately prepared to ensure adhesion of the primers, nor can they be adequately sanded in preparation for the final top coatings, nor adequately polished. It is also impossible to control the dust in the air, let alone the potential for overspray onto other surfaces not intended to be coated. We remove your joinery items and undertake works under controlled conditions at our workshop factory.



### What happens to my end panels?

You will be amazed at what our well trained staff are capable of achieving with the extraction or covering of your existing kitchen panels and wall infills. We will need to inspect your kitchen to ensure we can satisfactorily remove these panels, or be able to offer an appropriate solution.

### Can you apply 2pac systems to old natural timber doors?



No, while the coatings will adhere there are significant issues with future cracking. Natural timber doors are generally constructed of several pieces of timber, and these will crack as the timber expands and contracts with changing temperature conditions within your home. Cracks will generally start appearing in as little as three months as the seasons change. There are similar issues with timber veneer, which is

only a very thin film of timber glued to the underlying particle board.

Our guarantee does not apply to applications on timber or veneers for this reason.

### What colours and sheens can I choose?

We offer two sheen levels, a very high 100% Gloss which is cut and polished in a similar process to your motor vehicle, or a 30% Satin/Matt.

The 30% finish is technically a Matt, however we refer to it as Satin due to the slight sheen that is visible when viewed from an angle, the sheen is a result of the highly prepared surface and the finely applied top coats.

We can match colours very closely to the existing if required, otherwise choose a colour from the Dulux range of solid colours, there are thousands to choose from.



### What can I do with the colour on the back of my old doors?



You have three options to consider, economically you could leave them in the colour they currently are, or could undertake 2pac coating works to both faces, but the most satisfactory economical solution is for the rear faces to be prepared and applied with a 2pac polyester finish. The polyester finish does have a sheen and is readily cleanable, but not the same quality of finish as the front and edges, looking more like the melamine finish on the internals of your cabinets. A very economical outcome, and in keeping with the modern melamine backed new doors.

### How do I choose new Laminate finishes?

Our showroom has wall panels of sample chips from the Wilson Art Range of laminates for both doors and benchtops, to make your choice from.





## Kitchen, Laundry and Bathroom Renovations

### What is the Replacement Laminate Process?



The process for replacing your doors, drawer fronts and panels with new laminate finishes is quite simple, we attend at your home and extract the joinery components (the skins of the kitchen – doors, drawer fronts and panels), leaving you with a functional kitchen.

Using the old joinery as templates, we manufacture the new joinery items, then return to install all of the new components to give you a new kitchen look at a budget cost.

### How else can I modify my kitchen, laundry or bathroom?



There are a number of additional ways to modernize your kitchen, laundry or bathroom as well, with a range of sturdy handles to select from our collection. Extending the end and island panels to the floor can have a dramatic effect.

We can modifying your overhead cabinets to enable additional space for the likes of newer larger fridges, and install new soft closing drawers in-lieu of doors, soft closing cabinet hinges, install lazy Susans into corner spaces, wire pull out baskets, even install pull out waste bin drawers and laundry baskets.

### Can you modify my bench to give me more bench space?

We often remove privacy/server bars from the rear of benches to enable alternative bench tops to extend over. These bars tend to be areas of clutter, and not very inviting when entertaining visitors while preparing your culinary delights.

Another source of bench top space is the removal and trimming of the utility cabinets and doors to match the height of the adjoining overhead cabinets. Utility cabinets tend to consume a considerable amount of bench top space both within the cabinet, and at the front to enable the doors to open, all just to hide away a kettle and toaster. Often the internals of these cabinets are stained from the heat generated from the appliances.

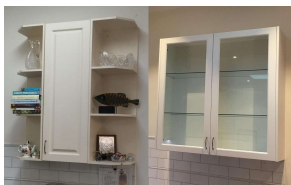
### Can you replace the benchtops?

Yes with either new laminate benchtops in a range of modern finishes and edge types, or replacement with new reconstituted stone benchtops from a large range of finishes.



### Can I have minor cabinets modifications undertaken?

Often when modernizing an existing kitchen, laundry or bathroom, some minor cabinetry works can be a solution to some of your issues. Larger fridge spaces can sometimes be created, oven tower modifications for alternative ovens with a microwave space above and drawers below.



Alternative rangehoods or canopies can often be accommodated with careful planning of the space, you will need an electrician to install the appliance into the space that we create. Other spaces may need attention such as dishwashers, microwaves, waste bins - with these we can examine the space and where possible provide a solution.

### Kickers - How do you deal with these?

Simple, we install 3mm 2pac coated cover panels to match the rest of the kitchen, or brushed aluminum skirting if you wish to highlight your stainless appliances.

For kitchens that have floating floors, the kicker covers can be made in most instances of thicker material to cover the expansion gap covered by the unsightly moulding strip.



## Kitchen, Laundry and Bathroom Renovations

### Splashbacks – Can you assist with these?

While we cannot help you with a replacement tiled splash-back, we can assist with toughened colour backed glass and mirror splashback, or alternatively with stone. The choice of colour for the splashback can be chosen from any Dulux solid colour, or if you wish a metallic finish then we have a large selection of swatches to choose from.

We use Starfire glass which is a low iron glass that eliminates the majority of the green effect from normal window glass that has a mint green look to it.



### Can I change my handles and repair the holes?



Handles knobs or none, is your decision to make. Be assured we will drill for the new handle holes if different to your existing, and can appropriately repair the old holes where required. While handles are the most practical for keeping a clean door, knobs do provide an alternative aesthetic. While push to open requires multiple handling of the door face on each opening of the door, this is still readily cleanable with a dry microfibre.

### Will you change my hinges?

Not all kitchens need to have any work done to their existing hinges, however bare in mind the three dimensional adjustments of the modern soft closing hinge, which generally allows for finer adjustments to your door alignments.

There are many types of hinge design, giving each hinge a unique application, we will advise you on the selection of the most appropriate hinge for your specific application.



### Can I have more drawers?



Most kitchens have under-bench door spaces that can readily be converted to a bank of soft closing drawers. If your old drawers have seen better times, these can generally be converted to new soft closing drawer assemblies, or perhaps more economically to convert the existing runners to soft closing sliders.

### What is the Warranty period?

While our warranty period for our 2pac workmanship for commercial clients is one year, for our domestic clients we have a 10 year warranty period. On all hardware, benchtops, and splash-backs we have a one year warranty.



### What if the works I need done are outside of the warranty period?

For minor kitchen works we offer a booking service via:

**[procoatkitchenrepairs.com.au](http://procoatkitchenrepairs.com.au)**

### Are contracts going to be required?

Under Victorian law any works that are \$10,000 or over must have a formal contract in the prescribed format. We will provide you with contracts in these instances, and if the value exceeds \$16,000 you will also be issued with Home Warranty Insurance from the VMIA.

